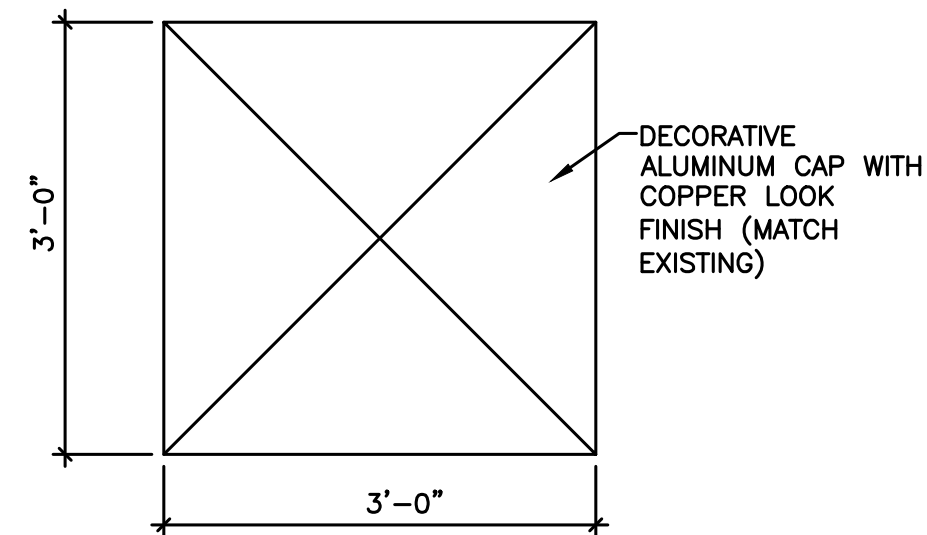


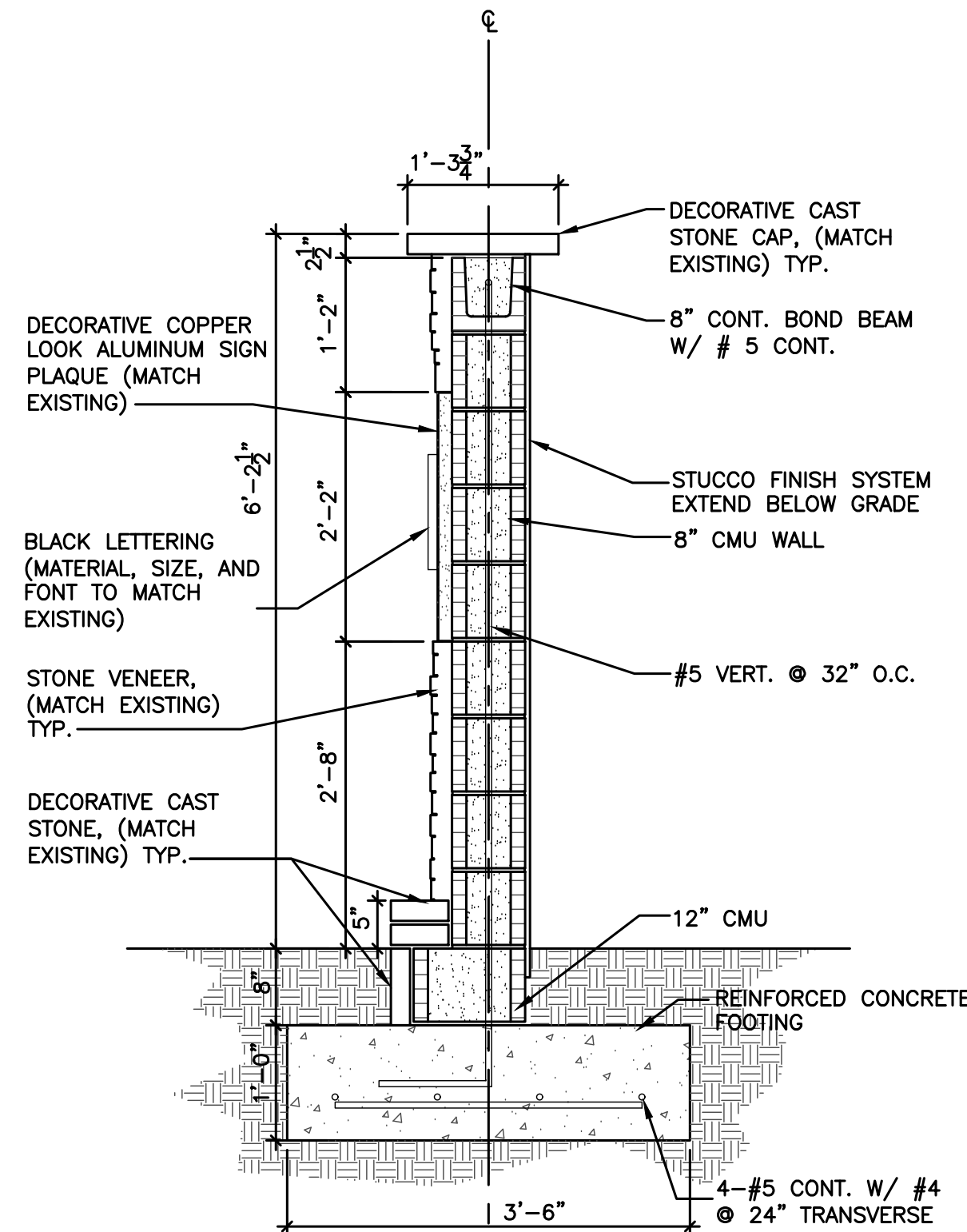
1 COLUMN CAP PROFILE

SCALE: 1-1/2"=1'-0"



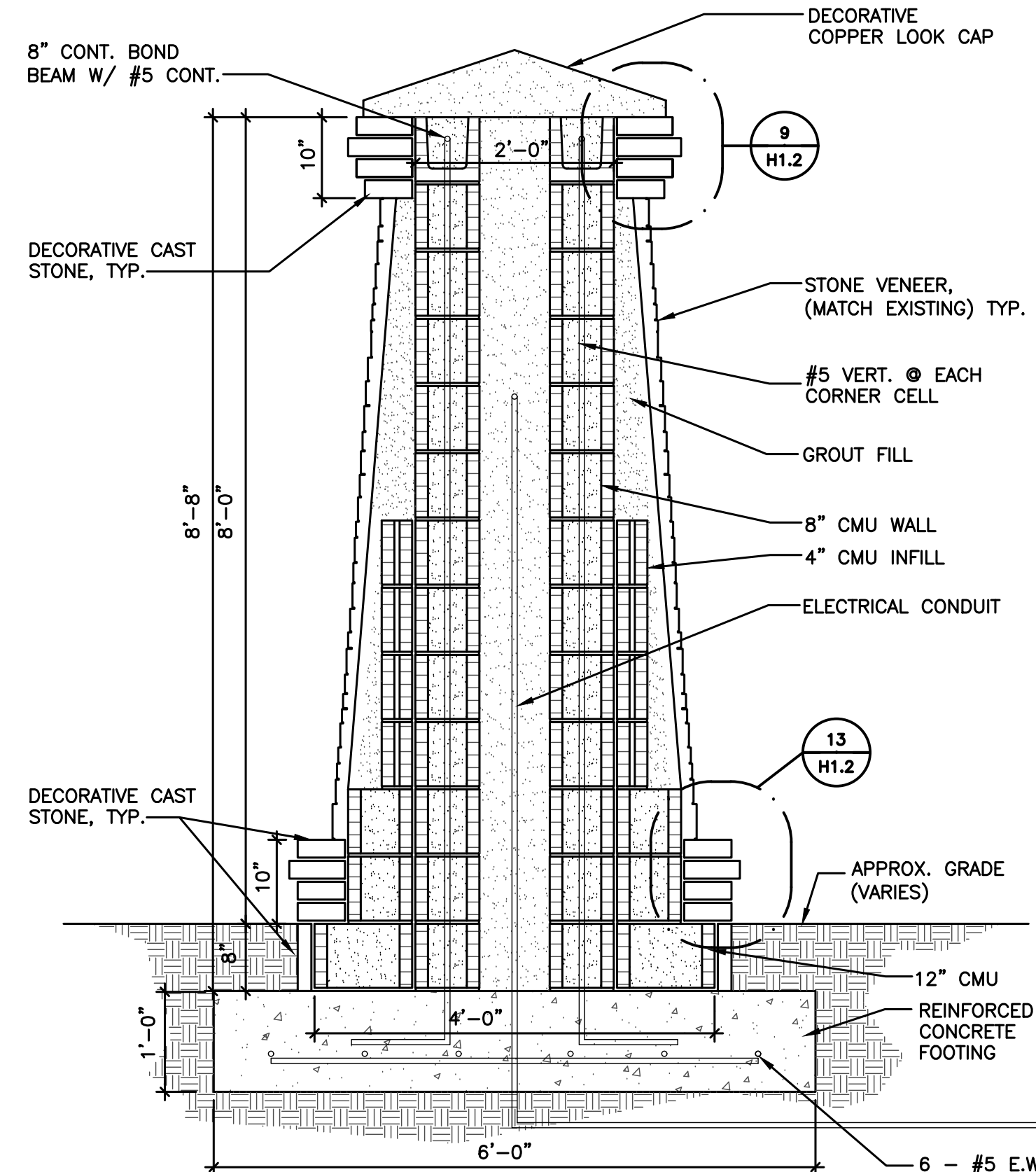
5 COLUMN CAP PLAN DETAIL

SCALE: 1-1/2"=1'-0"



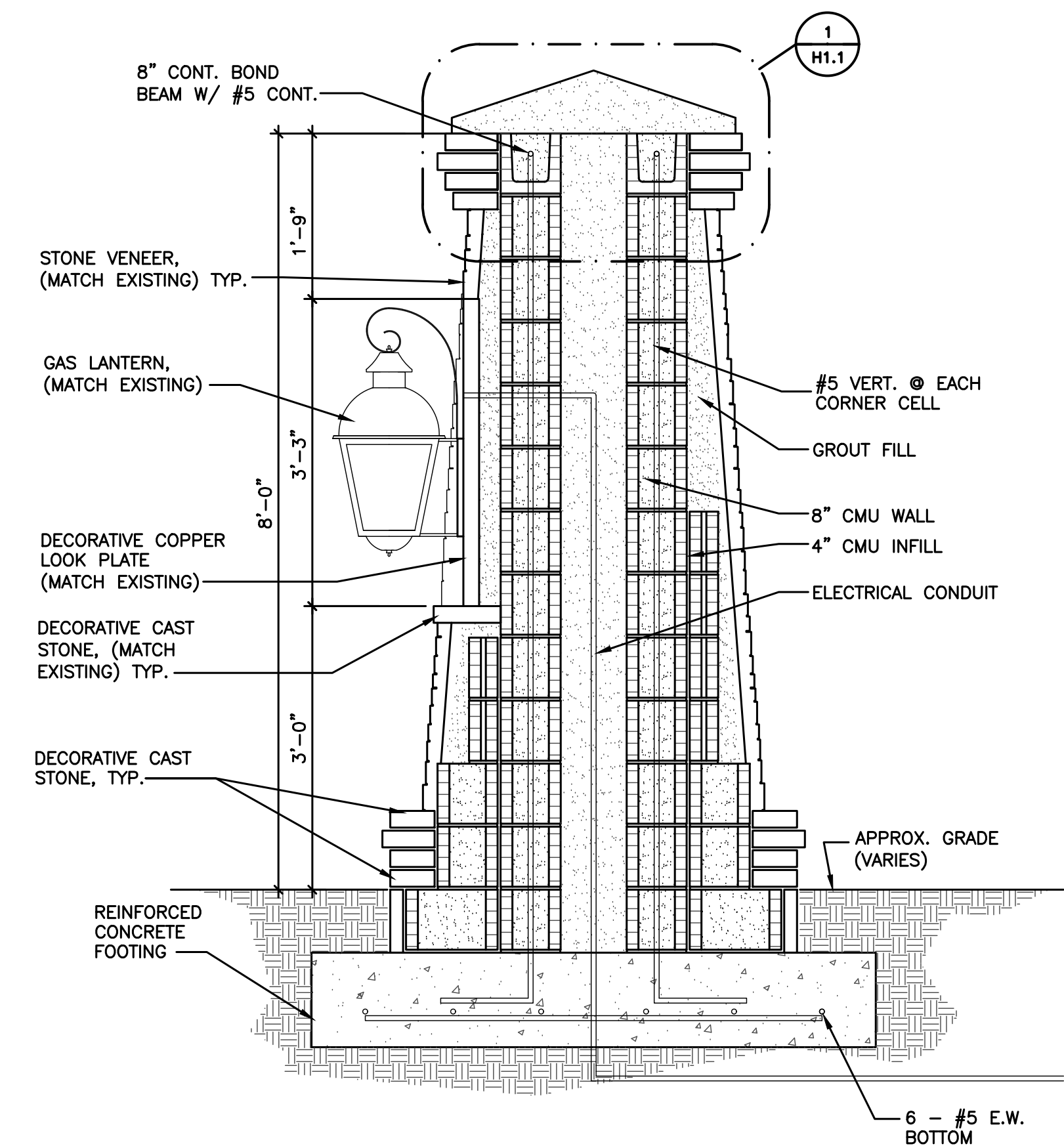
6 SECTION @ ENTRY SIGN WALL

SCALE: 3/4"=1'-0"



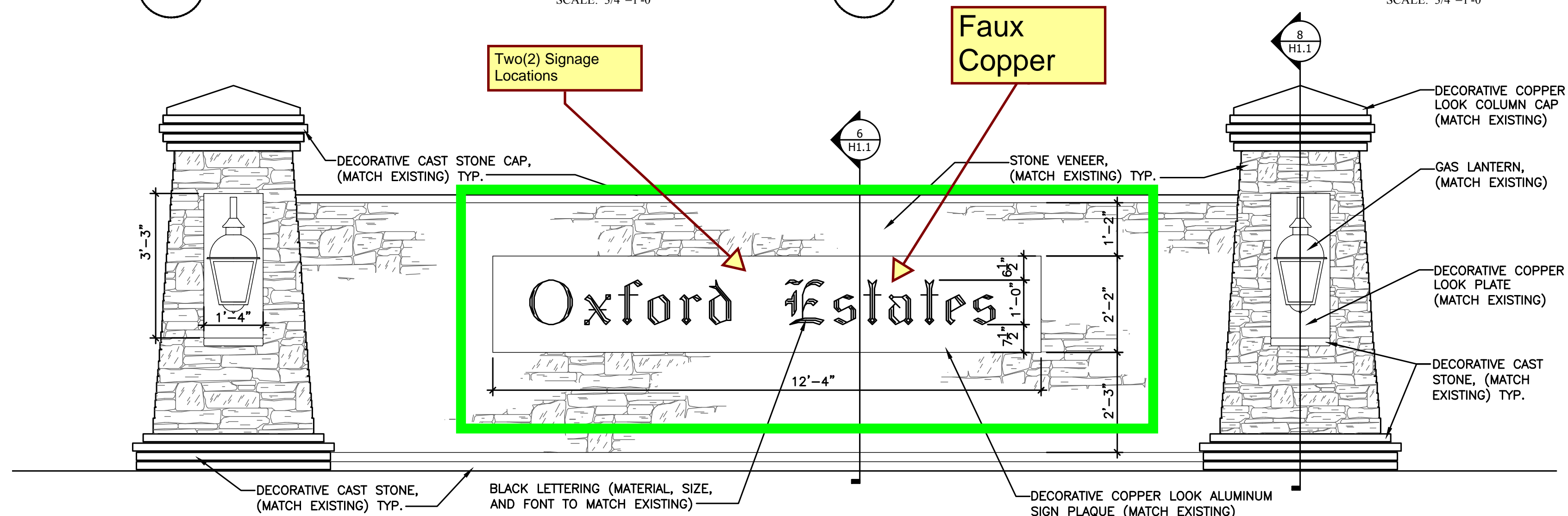
7 COLUMN 'A' SECTION

SCALE: 3/4"=1'-0"



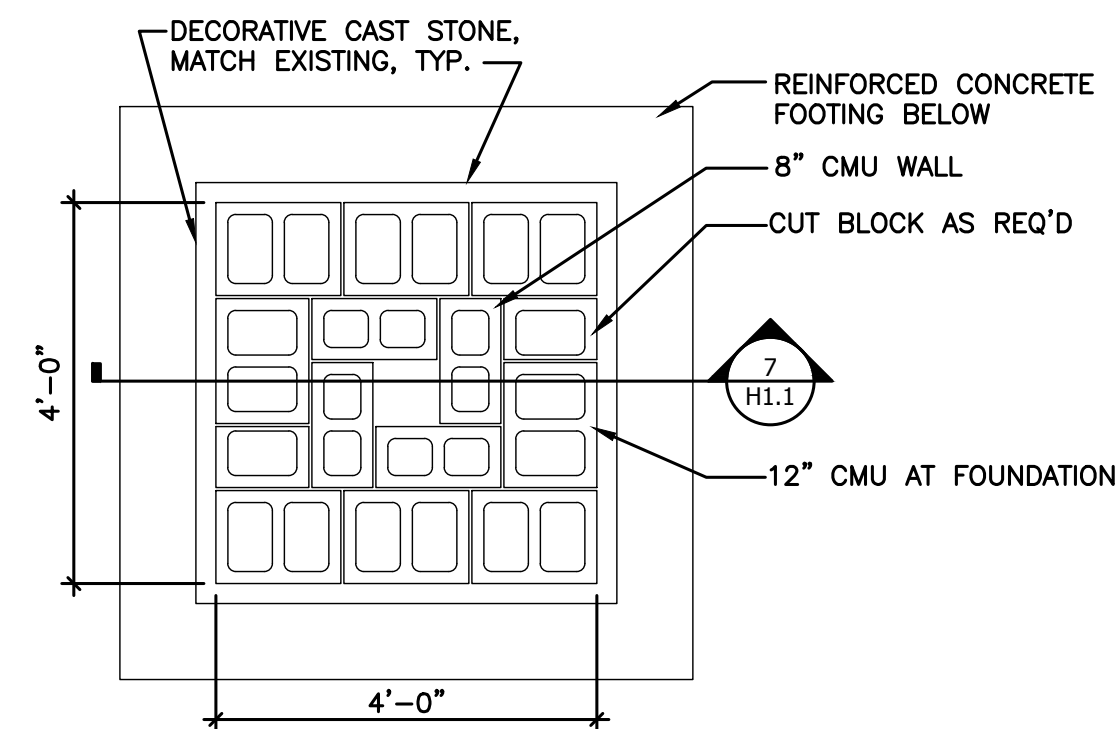
8 COLUMN 'A' SECTION @ LANTERN

SCALE: 3/4"=1'-0"



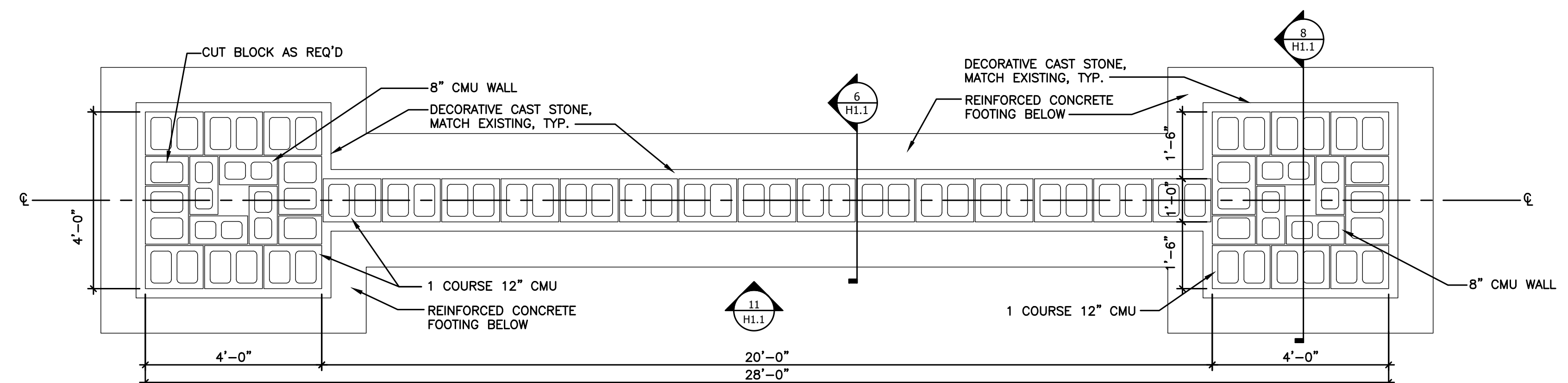
11 ENTRY SIGN ELEVATION

SCALE: 1/2"=1'-0"



14 COLUMN 'A' FOUNDATION PLAN

SCALE: 1/2"=1'-0"



15 ENTRY SIGN FOUNDATION PLAN

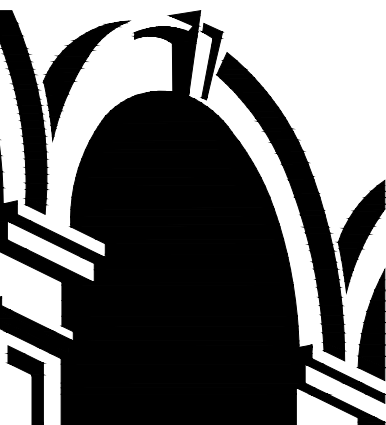
SCALE: 1/2"=1'-0"

REVISIONS

NO.	DATE	DESCRIPTION	BY

THIS DRAWING IS AN INSTRUMENT OF SERVICE AND THE PROPERTY OF BASHAM & LUCAS DESIGN GROUP AND SHALL REMAIN THEIR PROPERTY. THE USE OF THE DRAWING IS RESTRICTED TO THE ORIGINAL SITE FOR WHICH IT IS PREPARED AND PUBLICATION THEREOF IS EXPRESSLY LIMITED TO SUCH USE.

OXFORD ESTATES  
EAST ENTRY  
ST. JOHNS COUNTY, FLORIDA  
ENTRY SIGNAGE DETAILS



BASHAM  
& LUCAS  
DESIGN GROUP, INC.

7645 GATE PARKWAY SUITE 201  
JACKSONVILLE, FLORIDA 32256  
(904) 731-2323 • bashamlucas.com  
LN: AA26000586 | LC26000508

DRAWN BY BHT  
CHECKED BY MTL  
DATE 12-01-17  
JOB NO. 17-16

H1.1  
PERMIT SET